

BASS 5100

Automatic machine for short seams
for curved and straight seam pockets

BASS 5100

Automatic machine for short seams
for curved and straight seam pockets

Technical Specifications

Dimensions

Length/with bundle clamp1600 mm
Width950 mm
Height1.300 mm

Table height

Manually adjustable from 850 mm to 1150 mm

Weight

Basic equipment.....200 kg

Compressed air

Nominal pressure.....20 NI/6 bar

Power supply

Rated voltage220V/50/60 Hz
AC voltage220V/50/60 Hz
Power consumption.....0,7 kWh

Sewing System

Maximum sewing speed 4500 rpm
Maximum seam length165 mm for curved pockets
and variable for straight pockets
Maximum seam depth.....50 mm
Stitch length0,5-4,5 mm
Needle system.....134
Needle size.....80-110 Nm

Examples of output

Up to 2800* seam pockets in 8 hours

*dependent on the seam length

Basic equipment

- Lock stitch head Brother 7200 with integrated DC positioning drive and motor controller,
- Electromagnetic thread cutter
- Freely programmable micro-processor controller with LCD display
- Main clamp drive by controlled stepper motor
- Sensing the start and end of the sewing material by photocell
- Back tacking at the beginning and end of the seam or stitch condensation as an option
- Needle thread monitoring (bobbin thread monitoring as an option)
- Manually adjustable frame height from 850 mm to 1150 mm
- AC voltage 190 V-240 V, 50/60 Hz
- Electromagnetic thread cutter device
- Straight clamp
- Curved clamp
- Memory Chip
- Scissors for cutting notches

Options:

- Bundle clamp
- Vacuum pump



The BASS 5100 is a sewing machine for processing straight and curved (side) seam pockets.

Advantages

- Up to 2800 seam pockets in 8 hours (dependent on the seam length)
- Quick learning process
- Simple operation
- Freely programmable



Automated-Sewing-Systems AG

Am Beetacker 3 · 63856 Bessenbach
Fon: +49 6095 99233-0
Fax: +49 6095 99233-20
E-Mail: info@assag.de
Internet: www.assag.de

More than 6,000 sewing machines worldwide

Since the year 2000, we develop and produce automatic sewing systems for the HAKA and DOB production and market them all over the world. Among others, our range of products include automatic piping pocket, closing seam and serging units as well as engineered workstation

Ranging from the development and construction right up to installation and programming, we complete all work steps in our company in Germany. In this manner, we can ensure uniform and consistently high quality in all stages of production.

Our sewing systems provide functional and process-optimised solutions. We develop small quantities of special machines for specific customer requirements. We shall be pleased to prepare a unique offer even for you.

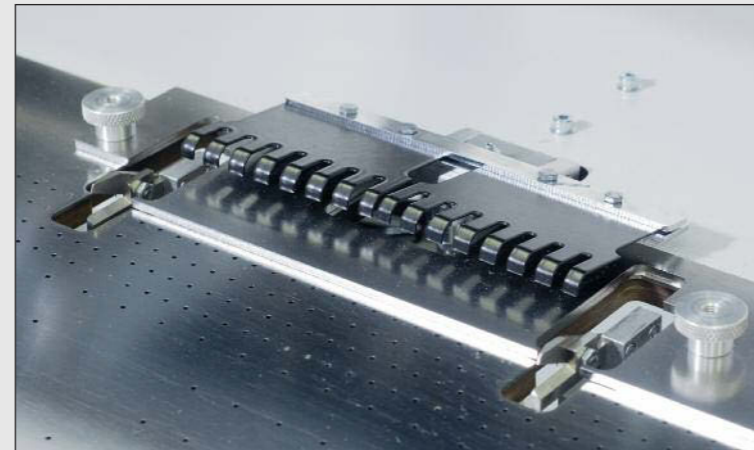


BASS 5100

Automatic machine for short seams for curved and straight seam pockets



Easy preparation and administration as well as retrieval of the saved programs



Laying station for side seam pockets



Set-up kits for curved pockets



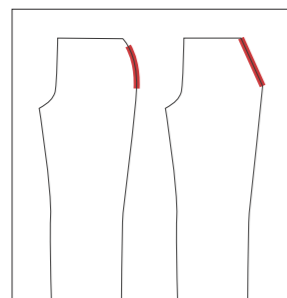
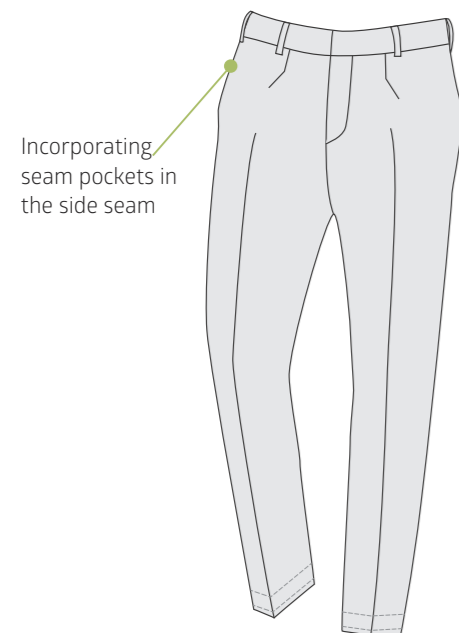
Set-up kits for straight pockets



Stepper motor-controlled transport

Sample seams

A few examples of the use of the BASS 5100 are illustrated here. A high level of sewing accuracy characterises the BASS 5100 for the production of side sewn pockets.



1 Straight pocket opening



2 Curved pocket opening

Advantages

- ✓ Quick learning process
- ✓ Simple operation
- ✓ Freely programmable
- ✓ Back tacking or adjustable stitch condensation possible
- ✓ Display of the machine functions as graphical icons
- ✓ Customised programming of stitch length
- ✓ Automatic seam length sensing by photocell
- ✓ Simple adjustment of seam width

Production Process

Program pre-selection:

The programmed seam is selected on the control panel.

Manual working steps:

The bundle with the trouser parts is placed in the bundle clamp (optional). Then, the front of the trouser is positioned at the edge stop, the vacuum is activated and the pre-finished pocket pouch is placed over the trouser part. After initiating the sewing operation, depending on the shape of the pocket, one or two notch cutters are switched on and the sewing part is brought below the needle with the transport clamp.

The operator can prepare the next sewing part just after the sewing part has been taken by the transport device and thus work in an overlapping and efficient manner.

Automatic sewing process:

The sewing parts are taken from the transport clamp and moved to the needle. Then sewing starts. After completion of the sewing operation, the sewn part is blown off.

Work ergonomics:

The system can be operated as a workstation either in standing or sitting position. The height of the table can be adjusted to the body height of the operator.

Performance Profile

The use of the BASS 5100 ensures enormous savings in time with respect to productivity by the completely overlapping working method as well as consistent sewing results with various materials.

It is possible to sew pockets in the side seam, curved and straight shapes with the BASS 5100. Depending on the shape of the pocket opening, the sewing is done optionally with one or two notch cutters.